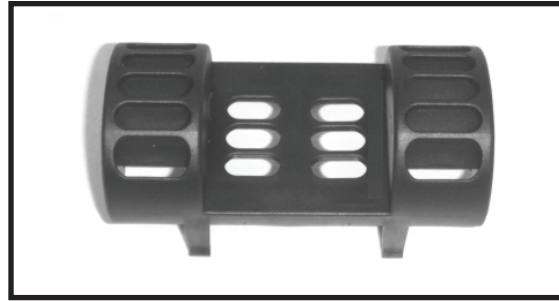


**Jeep® Center console Vent Switch Pod ( 97-06 TJ-LJ)**

Item List:

(1) Center Console Vent Switch Pod

(Switches sold separately)



**Important! Please read instructions completely before installing Switch Pod.**

Step 1. Remove factory AC-Heater vent from vehicle. A small screw driver can be used to pop vent from console.(Pic.1).



pic. 1

Step 2. To install switches use a box knife to cut along switch locator channels. With switch channels removed push switch into vent pod. Switch will snap and lock into position. (Pic. 2 - Pic.3)



pic. 2

Step 3. Wiring can be routed between vent pod and console. Note: Console face does not need to be removed. Image supplied for reference only (Pic.4).



pic. 3

Step 5. Install new vent switch pod panel into center console (Pic 5).



pic. 4

Note: Switch pod is designed to stay in a fixed forward position. Air flow will be routed around switches.



pic. 5