



OMIX-ADA, Inc.

13579.04, 13579.05, 13.579.06

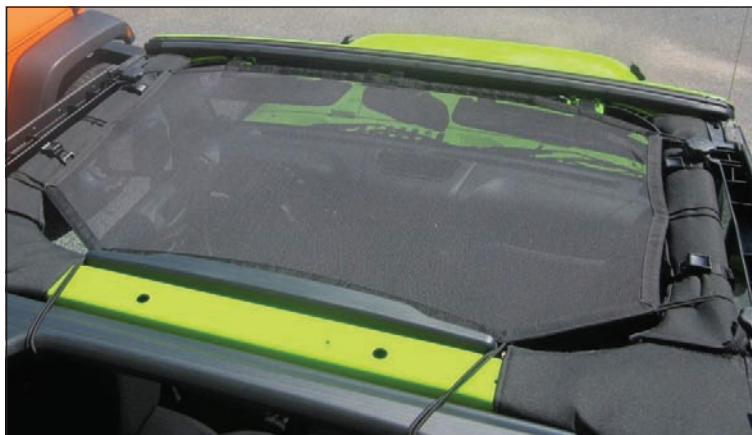
460 HORIZON DR. SUITE 400 | SUWANEE, GA 30024 | PHONE: 770-614-6101 | FAX: 770-614-6069 | info@omix-ada.com

JEEP WRANGLER® ECLIPSE SUN SHADE (2007-2013 2dr/4dr JK)

Contents:

- Eclipse Sun Shade
- Mesh Storage Bag

NOTE: The Eclipse Sun Shade has been designed to work for both 2dr @ 4dr models. Design allows shade to remain in place with soft top closed or Freedom panels in place.



1. Before installing flip soft top to Sunrider feature or lower top to full down position. Freedom panels will need to be removed for installation on hard top vehicles. Slide front side Velcro straps through windshield footman loops and secure (fig.1). Loop rear Bungee straps over factory sports bar and back to strap button (fig.2).



Figure 1



Figure 2

2. Slide center Velcro strap through center windshield footman loop. Note: Two straps have been provided for all years (07-09) (10 - UP). The strap not used can be cut away (fig.3). Connect Bungee hooks to footman loops. Hooks go to the inside of footman loops (fig.4).



Figure 3



Figure 4

OMIX-ADA® TECHNICAL SUPPORT

PHONE: M-F 8am - 5pm EST 1-800-449-6649 | EMAIL: techsupport@omix-ada.com

FOR WARRANTY INFORMATION VISIT: www.Omix-Ada.com



OMIX-ADA, Inc.

13579.04, 13579.05, 13.579.06

460 HORIZON DR. SUITE 400 | SUWANEE, GA 30024 | PHONE: 770-614-6101 | FAX: 770-614-6069 | info@omix-ada.com

JEEP WRANGLER® ECLIPSE SUN SHADE (2007-2013 2dr/4dr JK)

3. Loop remaining 6 Bungee cords around the outside of roll bar and back to strap buttons (fig.5). Note: Cords should be wrapped around roll bar only. DO NOT go around plastic door surrounds. After all cords are secured double check placement and adjust as needed (fig.6).



Figure 5



Figure 6

4. With shade installed pull front Velcro straps tight. Shade should fit tight and be evenly spaced around roll bar (fig.7).

To close top, release side Velcro straps from footman loops. Drop latches past shade and secure. Double straps back onto self and flip visors back into place. Freedom panels will require the center strap and bungee hooks also be released before locking panels (fig.8).



Figure 7



Figure 8

5. Eclipse shade has been supplied with a mesh storage bag. Bag and shade can be stored in either the center console (fig.9) or glove box (fig.10).



Figure 9



Figure 10

OMIX-ADA® TECHNICAL SUPPORT

PHONE: M-F 8am - 5pm EST 1-800-449-6649 | EMAIL: techsupport@omix-ada.com

FOR WARRANTY INFORMATION VISIT: www.Omix-Ada.com



OMIX-ADA, Inc.

13579.04, 13579.05, 13.579.06

460 HORIZON DR. SUITE 400 | SUWANEE, GA 30024 | PHONE: 770-614-6101 | FAX: 770-614-6069 | info@omix-ada.com

JEEP WRANGLER® ECLIPSE SUN SHADE (2007-2013 2dr/4dr JK)

7. For 2 Door Full Sun Shade (13579.06) 6 additional Bungee cords will require attachment (fig.5; fig.6). Follow Figure 11 as a guide.

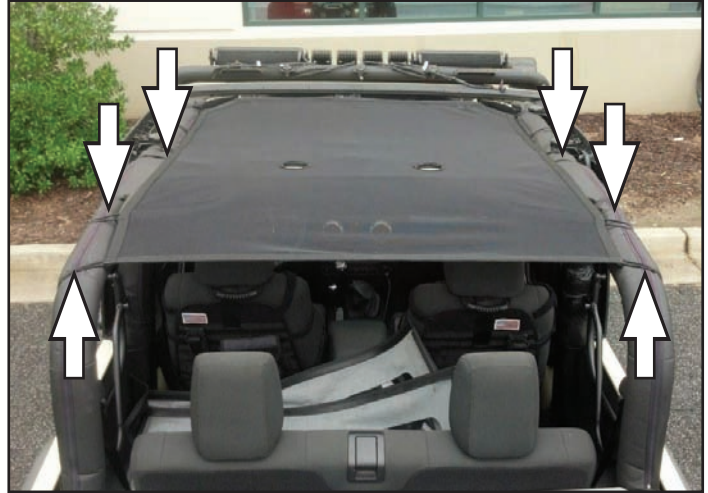


Figure 11

8. For 4 Door Full Sun Shade (13579.05) 8 additional Bungee cords will require attachment (fig.5; fig.6). Follow Figure 12 as a guide.

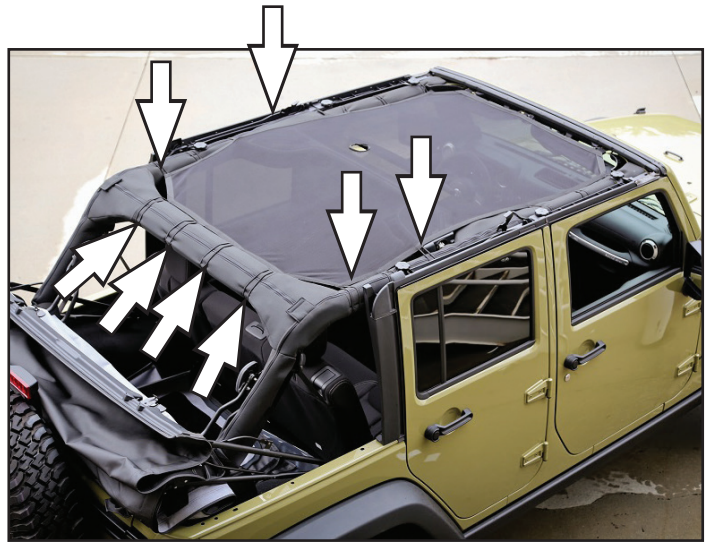


Figure 12

OMIX-ADA® TECHNICAL SUPPORT

PHONE: M-F 8am - 5pm EST 1-800-449-6649 | EMAIL: techsupport@omix-ada.com

FOR WARRANTY INFORMATION VISIT: www.Omix-Ada.com