

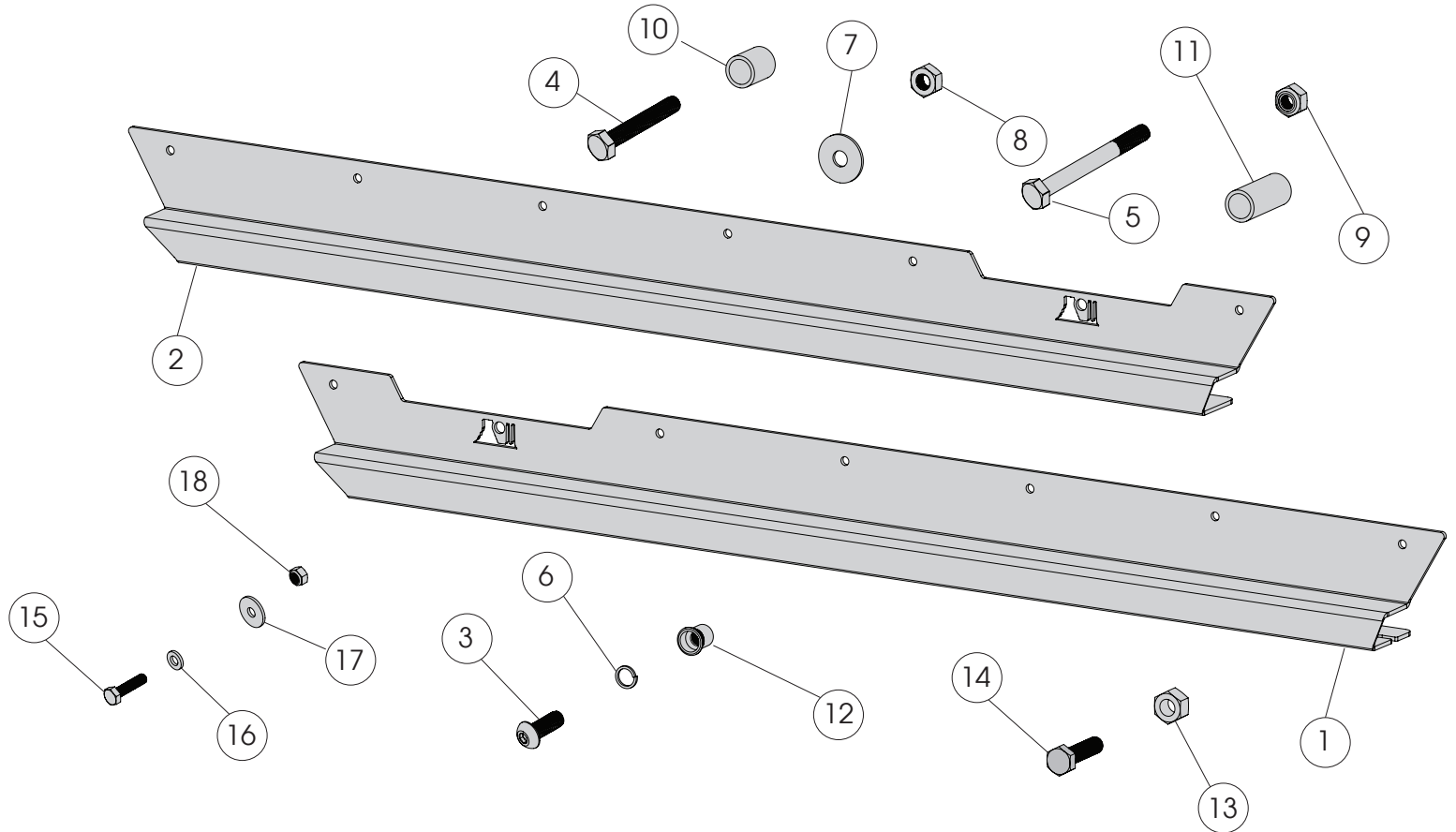


OMIX-ADA, Inc.

460 HORIZON DR. SUITE 400 | SUWANEE, GA 30024 | PHONE: 770-614-6101 | FAX: 770-614-6069 | info@omix-ada.com

Part #11504.16

## LJ Rock Slider Panels



### Components

1. Rock Slider Panel, LH	(1)	10. 25mm Spacer	(2)
2. Rock Slider Panel, RH	(1)	11. 45mm Spacer	(4)
3. M10 Button Head Bolt	(4)	12. M10 Rivet Nut	(4)
4. M10 Short Hex Bolt	(2)	13. Hex Spacer Tool	(1)
5. M10 Long Hex Bolt	(4)	14. Hex Bolt Tool	(1)
6. M10 Lock Washer	(8)	15. M6 Hex Bolt	(4)
7. M10 Flat Washer	(40)	16. M6 Small Washer	(4)
8. M10 Nut	(8)	17. M6 Large Washer	(4)
9. M10 Lock Nut	(6)	18. M6 Lock Nut	(4)

#### OMIX-ADA® TECHNICAL SUPPORT

PHONE: M-F 8am - 5pm EST 1-800-449-6649 | EMAIL: techsupport@omix-ada.com

FOR WARRANTY INFORMATION VISIT: [www.Omix-Ada.com](http://www.Omix-Ada.com)



OMIX-ADA, Inc.

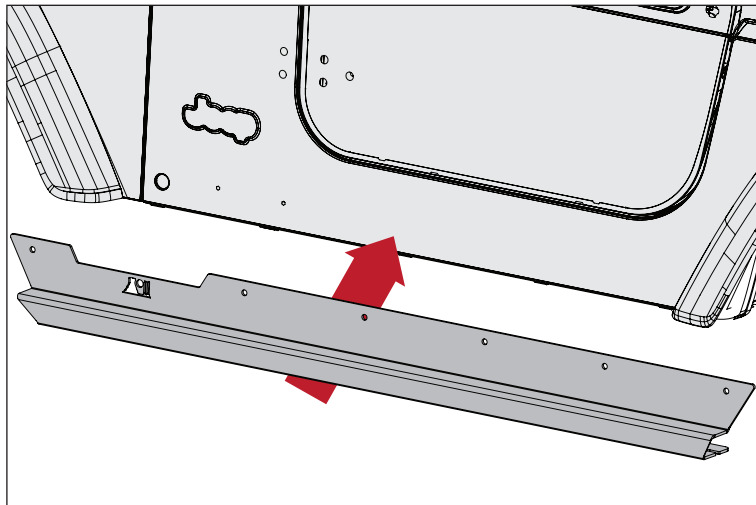


460 HORIZON DR. SUITE 400 | SUWANEE, GA 30024 | PHONE: 770-614-6101 | FAX: 770-614-6069 | info@omix-ada.com

## LJ Rock Slider Panels

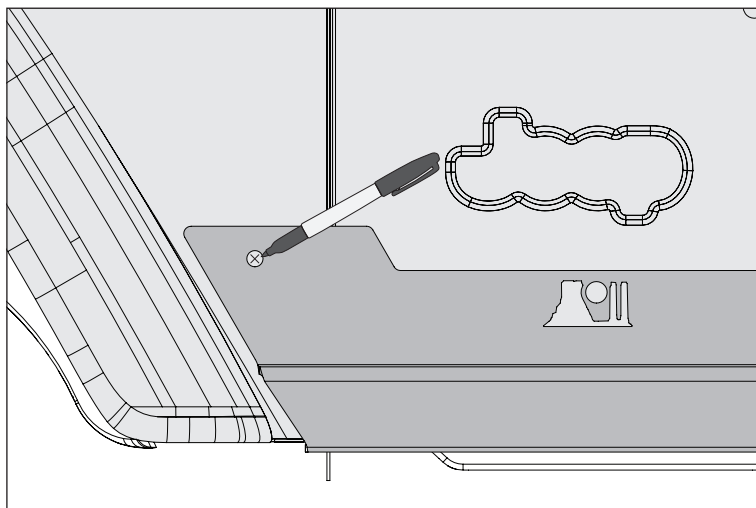
1. Remove any side steps or other panels before beginning.
2. Ensure all vehicle surfaces that are covered by Rock Slider Panels are clean before beginning.
3. Carefully position Rock Slider Panels between flares so the fit is snug.

**NOTICE** Flares may need to be loosened to allow proper fitment of Rock Sliders.

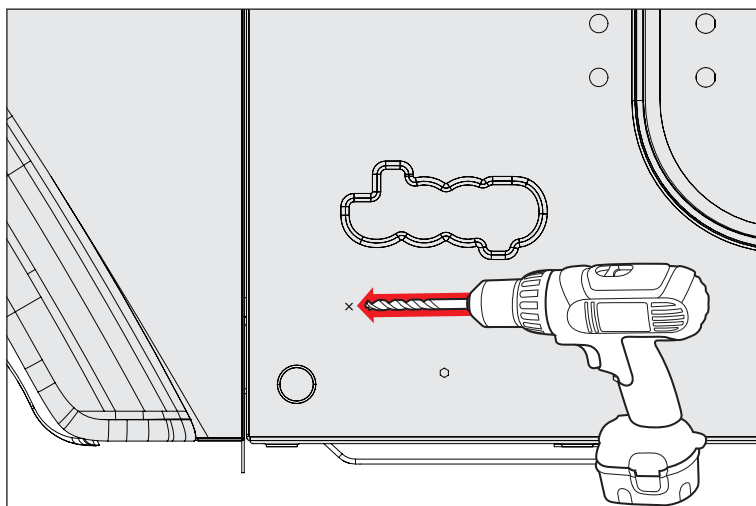


4. Once positioned, mark and center punch 6 side holes for drilling.

**NOTICE** Before drilling, ensure all wires on inside of vehicle are out of the way.



5. Beginning with a 3/16" bit, drill 6 mounting holes into side body. Continue with 7/16" bit for front 4 holes and 9/16" for rear 2 holes to finish full diameter of mounting points. Clean any metal chips and shavings from vehicle before continuing.





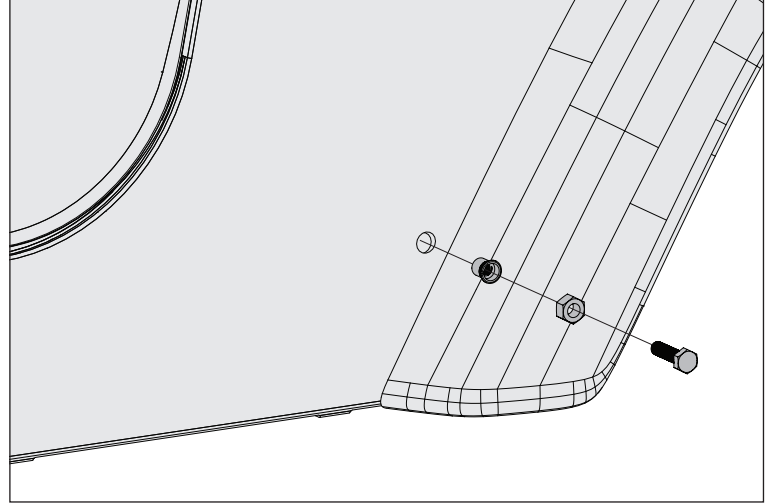
OMIX-ADA, Inc.

460 HORIZON DR. SUITE 400 | SUWANEE, GA 30024 | PHONE: 770-614-6101 | FAX: 770-614-6069 | info@omix-ada.com

## LJ Rock Slider Panels

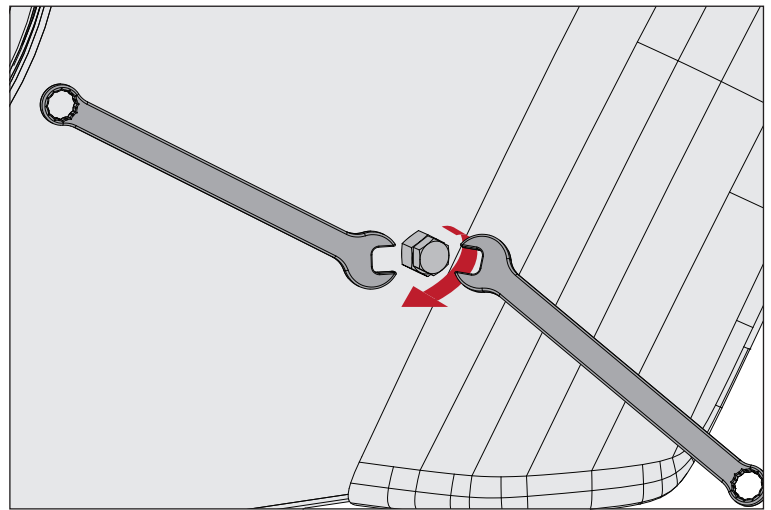
6. The two rear-most mounting points will require M10 Rivet Nuts. Insert Nut into two rear-most holes and align with Clearance Nut Tool.

7. Insert Hex Bolt Tool into Hex Spacer Tool and thread into Rivet Nut.



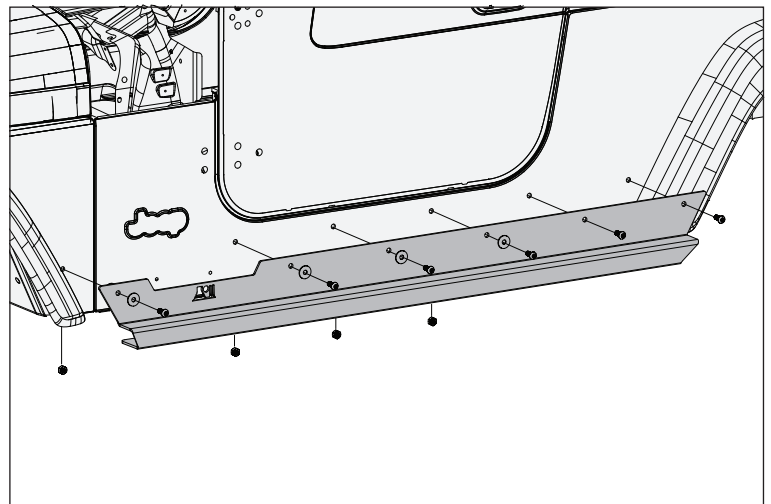
8. Using two wrenches to keep Hex Spacer Tool from spinning, tighten Hex Bolt Tool until Rivet Nut is fully collapsed.

9. Remove Hex Spacer Tool and Hex Bolt Tool.



10. Install Rock Slider Panels to vehicle using M10 Button Head Bolts, M10 Flat Washers, and M10 Nuts.

11. Evenly hand tighten bolts until Rock Slider Panels are in correct position.





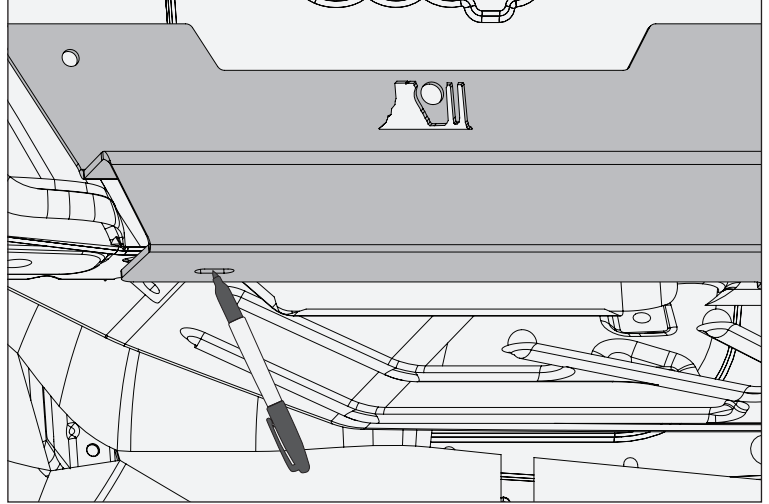
OMIX-ADA, Inc.

460 HORIZON DR. SUITE 400 | SUWANEE, GA 30024 | PHONE: 770-614-6101 | FAX: 770-614-6069 | info@omix-ada.com

## LJ Rock Slider Panels

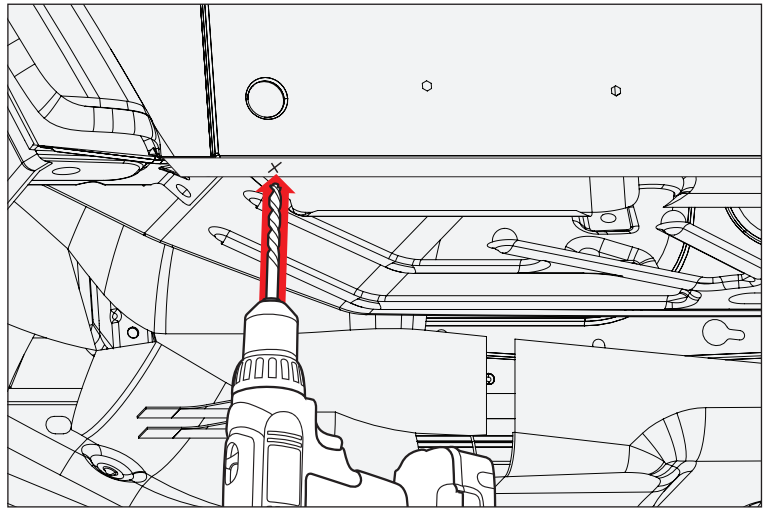
12. Mark and center punch three bottom holes, using holes in Rock Slider Panels as a guide.

13. Remove Rock Slider Panels.

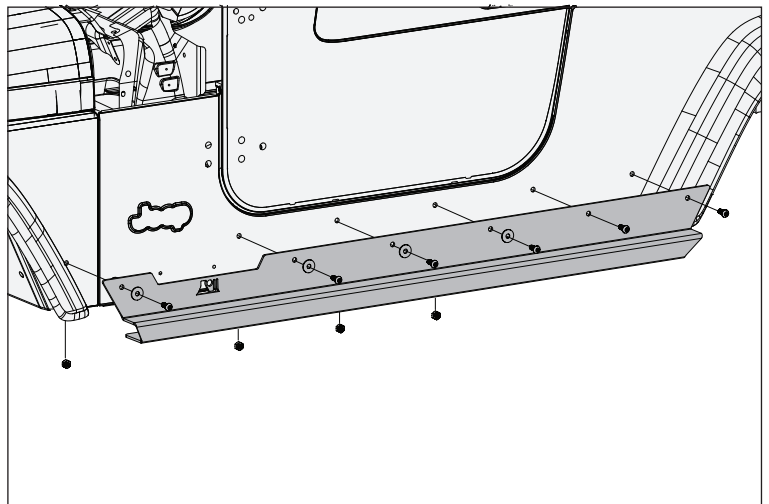


**NOTICE** Before drilling, pull away carpeting and anything that may be in way of drill.

14. Begin drilling with 3/16" bit, then 7/16" for correct diameter.



15. Attach side mounting holes in Rock Slider Panels using M10 Button Head Bolts, Flat Washers, Lock Washers, and M10 Nuts.



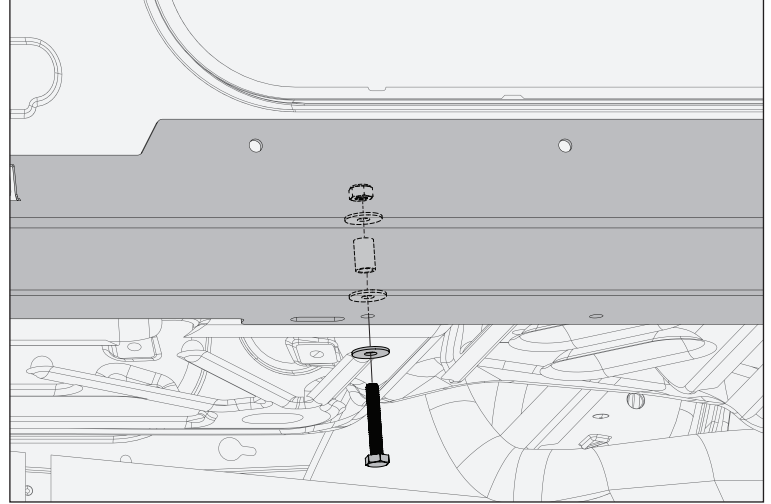


OMIX-ADA, Inc.

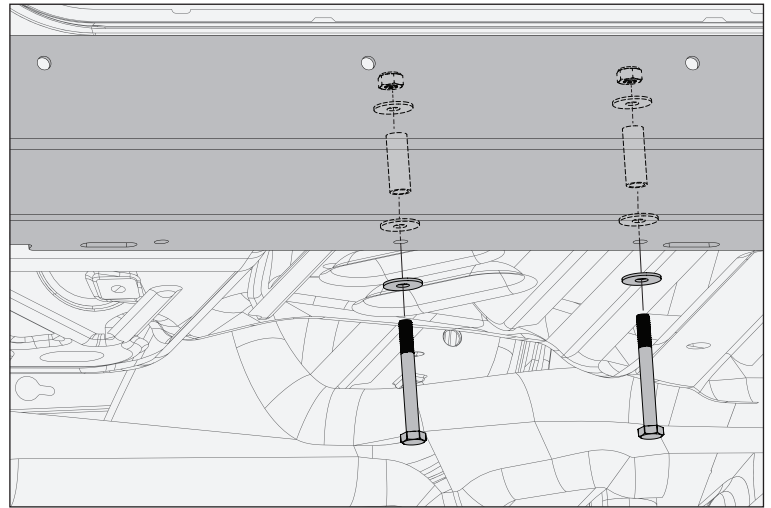
460 HORIZON DR. SUITE 400 | SUWANEE, GA 30024 | PHONE: 770-614-6101 | FAX: 770-614-6069 | info@omix-ada.com

## LJ Rock Slider Panels

16. Attach front bottom hole using M10 Short Hex Head Bolt, Flat Washers, 25mm Spacer, and Lock Nut.



17. Attach remaining bottom holes using M10 Long Hex Head Bolt, Flat Washers, 45mm Spacer, and Lock Nuts.



18. Attach Rock Slider Panels to 4 body mount tabs through 4 mounting slots using M6 Hex Bolts, M6 Large and Small Washers, and M6 Lock Nuts.

