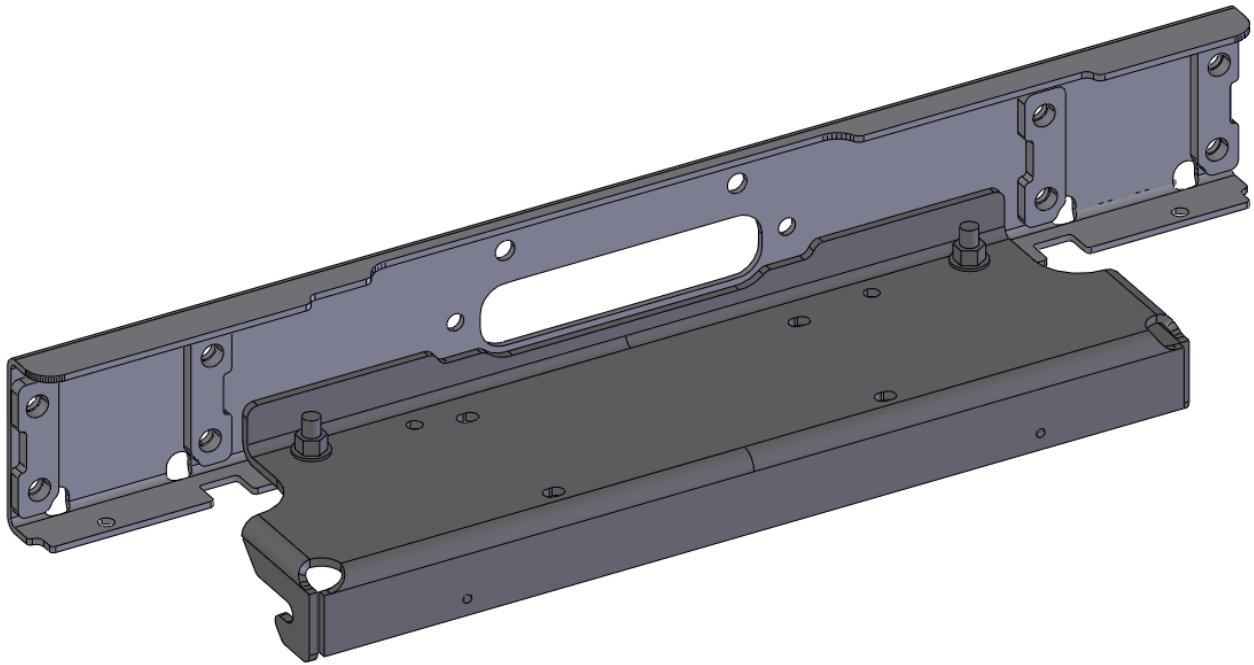




B. WINCH PLATE INSTALLATION

(Skip to step C if not installing)



1. Assemble the winch plate and fairlead brackets together. Use 1/2" x 1 1/2" hex head bolts and flange nuts going from the bottom up(washer not needed)
2. Place the winch mount assembly into position onto the frame
3. Insert the (8) 1/2" button head bolts through the front mounting holes to align
4. With the winch mount aligned, bolt the winch mount to the lower frame attachment points using 1/2" x 1 1/2" hex head bolts, washers, and nut plate
5. **There might be a gap between the winch mount and frame due to frame variations. Use the supplied 1/2" washers to fill the gap on either side**
6. Remove the (8) button head bolts
7. Install the square nuts that come with the winch kit into the winch and feet. A little silicone is helpful to hold them in place.
8. Place the winch onto the winch mount. Do not install winch mounting bolts at this time